

FLYNN STUDENT MATINEES



2019
2020

Make
Learning
Come
Alive!





Expand the learning

for students

School & District Partnerships

Beginning with professional learning, participating educators work one-on-one with a Flynn teaching artist to:

- Plan, implement, and evaluate arts-integrated curriculum
- Design and implement workshops before and after Student Matinee attendance
- Use the Words Come Alive professional learning model
- Connect to transferrable skills and Vermont Ethnic Studies Standards

Matinee Companion Workshops

When a Flynn teaching artist comes to your class, learning comes to life.

- Gain insight into artistic modes of communication and the creative process
- Make connections with themes and concepts in the performance
- Understand content connected to your curriculum in a deeper way

Study Guides

An essential component to the Student Matinee experience, our study guides:

- Build students' prior knowledge
- Extend the learning experience after the show
- Connect performances with academic content standards including Common Core, NEXTGEN, C3, and Vermont Ethnic Studies
- Provide activities to use with students and handouts to send home to parents

Visit www.flynncenter.org/studyguides.html to access this resource for free.

Expanded Learning Opportunities

The community is your classroom when you partner with the Flynn to create integrated learning experiences for your students. Through on-site workshops, staff-guided tours, and internship opportunities, we serve as a resource in Act 77 initiatives.

Contact schoolprograms@flynncenter.org to learn more.

for teachers

Design your curriculum with your students' creativity and other transferable skills in mind. Advance individual empathy and social cohesion in your classroom, school, and community in and through the arts.

Summer Institute

Save the Dates: August 12–16: Arts for Equity Educator Institute

Clemmons Family Farm, the Flynn, and Vermont Abenaki Artists Association are pleased to announce its collaborative institute from August 12 to 16 at Clemmons Family Farm in Charlotte. Teams of educators from schools or districts engage with nationally recognized leaders and Vermont's artists and cultural bearers of the African diaspora and Abenaki communities in culturally inclusive curricula and arts integration. Highlights include live performances by guest artists, place-based inquiry and learning, and curriculum design sessions.

Teacher Workshops & Arts Integration Conference

Get certification renewal credits, invigorate your teaching, and learn new strategies to integrate into your curricular content. Led by expert teaching artists and distinguished visiting artists, we offer experiential workshops throughout the year. Our annual Engaging Active Learners Conference, on **Thursday, December 12**, continues our focus on transferable skills and on the Vermont Ethnic Studies Standards. We offer professional development workshops for school and district in-services centered on arts-integration techniques to strengthen curricular topics including literacy, math, science, and more. PD Credit Available.

Lead Teacher Network

Lead teachers are key liaisons between their schools and the Flynn. They are the first to hear about each season's matinees, exciting artist residencies, discounts, and special offers like free workshops or grant opportunities. A vital resource for their schools, lead teachers offer input into the next season and **receive two free tickets to a Flynn-presented MainStage show of their choice and a gift from Spruce Peak.**

For details about these programs see our website, call 802-652-4548, or email education@flynncenter.org.





Prepare for your visit

Connections

Looking for Common Core, Next Gen, C3 Standards or Vermont Ethnic Studies?

We support these connections through our Study Guides, Companion Workshops, and by identifying select standards for each show.

Through writing responses in your classroom and/or use of Flynn Study Guides, **all performances can be linked to Common Core** Writing Standards 1-10 and/or Writing Standards for Literacy in History, Social Studies, Science, and Technical Subjects 1-10.

Student Matinees support the following

National Core Arts Standards:

Creating: Anchor #1, Anchor #2, and Anchor #3;
Responding: Anchor #7, #8, #9; and Connecting:
Anchor #10 and #11. **Seeing live performance provides rich opportunities to write reflections, narratives, arguments, and more.**

CC ELA =Common Core English Language Arts

CC Math =Common Core Mathematics

Next Gen =Next Generation Science

C3 Hist =C3 History

☾ Shows with this symbol are scheduled for public audiences at night or on weekends. See the Flynn or Spruce Peak Arts websites for details.

Lunch

If you need a place to eat lunch, please inquire about the options we have available at sms@flynncenter.org; for Stowe shows contact education@SprucePeakArts.org.

Bus money

We know transportation costs are a major factor in planning trips. The Flynn has a limited amount of funds to support busing for schools. Please email sms@flynncenter.org or include a note about your need with your order and we can explore whether funding is available for your schools.

Professional Learning

Enrich your curriculum with arts integration: join a Flynn Educator Workshop or design one specifically for your school or district.

Engaged students

Students who participate in activities that prepare them for their field trip to the Flynn are more engaged at the performance and make deeper connections to other areas of life and learning. Make the most of the field trip by using our **online Study Guides** or booking a **pre- and/or post-performance workshop** conducted by a Flynn Teaching Artist in your classroom.

Table of contents by grades

RECOMMENDED GRADE LEVELS

FLYNN MATINEES IN BURLINGTON	PK	K	1	2	3	4	5	6	7	8	9	10	11	12	DATE	PAGE
Red Kite Green Mountain	●	●	●	●	●	●	●	●	●	●	●	●	●	●	11/4	9
Rainbow Fish	●	●	●	●	●										2/13	16
The Snowy Day	●	●	●	●	●	●									3/23	18
Penguins	●	●	●	●	●										4/7	20
Llama Llama—Live!	●	●	●	●											4/13	21
Dog Man: The Musical			●	●	●	●	●								10/9	7
The One and Only Ivan				●	●	●	●	●							1/6	14
ENCORE! VYO & VSO				●	●	●	●	●							4/9	20
March						●	●	●	●	●	●	●	●	●	10/8	6
Isango Ensemble: The Magic Flute	●	●	●	●	●	●	●	●	●	●	●	●	●	●	10/25	9
Dance Theater of Harlem	●	●	●	●	●	●	●	●	●	●	●	●	●	●	11/20	12
Mayhem Poets							●	●	●	●	●	●	●	●	12/2	12
Daniel Bernard Roumain						●	●	●	●	●	●	●	●	●	12/12	13
VT Abenaki Artists Association: Nikwōbi	●	●	●	●	●	●	●	●	●	●	●	●	●	●	12/17-18	13
We Shall Overcome: Martin Luther King Jr.						●	●	●	●	●	●	●	●	●	1/22	14
Momix: Viva Momix	●	●	●	●	●	●	●	●	●	●	●	●	●	●	2/10	16
Flip Fabrique: Blizzard	●	●	●	●	●	●	●	●	●	●	●	●	●	●	3/16	18
Peking Acrobats	●	●	●	●	●	●	●	●	●	●	●	●	●	●	3/18	19
The Wolves (at UVM)											●	●	●	●	10/4	6
Diary of Anne Frank								●	●	●	●	●	●	●	10/10	7
Circa: Humans								●	●	●	●	●	●	●	10/18	8
Much Ado About Nothing								●	●	●	●	●	●	●	11/1	11
The Normal Heart (at UVM)												●	●	●	11/8	11
Warriors Don't Cry								●	●	●	●	●	●	●	1/24	15
Actors from London Stage: The Tempest									●	●	●	●	●	●	2/19	17
SPRUCE PEAK MATINEES IN STOWE	PK	K	1	2	3	4	5	6	7	8	9	10	11	12	DATE	PAGE
Go Home Tiny Monster	●	●	●	●	●	●	●								11/5	10
Che Malambo	●	●	●	●	●	●	●	●	●	●	●	●	●	●	2/5	15
David Gonzalez					●	●	●	●	●						5/14	21
Spruce Peak Chamber Music Society					●	●	●	●	●	●	●	●	●	●	3/27	19
Walk Two Moons							●	●	●	●	●				10/11	8
Rhapsody in Black									●	●	●	●	●	●	11/7	10
PROFESSIONAL LEARNING WITH GUEST ARTISTS: WORKSHOPS FOR EDUCATORS AT THE FLYNN																
Dance Theater of Harlem	●	●	●	●	●	●	●	●	●	●	●	●	●	●	11/19 4-6 pm	3
Daniel Bernard Roumain	●	●	●	●	●	●	●	●	●	●	●	●	●	●	12/12 4-6 pm	3
We Shall Overcome						●	●	●	●	●	●	●	●	●	1/22 4-6 pm	3
MOMIX	●	●	●	●	●	●	●	●	●	●	●	●	●	●	2/10 4-6 pm	3
Actors from the London Stage									●	●	●	●	●	●	2/18 4-6 pm	3

● Preschool/Early Elementary ● Elementary ● Elementary/Middle School ● Middle School/High School
● Pre-K through High School ● Sensory-friendly performance

Grade level recommendations are not exclusionary; they indicate grades that will benefit from a show even without preparation. Other grades are certainly welcome, at a teacher's discretion.



"Thank you so much for continuing to enrich lives with life-altering performances that have the potential to translate into real change in our society."

—Rachel Shusterman,
Camels Hump Middle School



At UVM's Royall Tyler Theater

The Wolves

By Sarah DeLappe

Friday, October 4 • 10 am
Grades 9-12 • 90 minutes • \$8.50

LIT, HLTH, ESS/SJ

Left quad. Right quad. Lunge! From the safety of their suburban stretch circle, a girls indoor soccer team navigates big questions and wages tiny battles with all the vim and vigor of a pack of adolescent warriors. *The Wolves* is a portrait of life, liberty, and the pursuit of happiness for nine American girls who just want to score some goals.

This matinee is part of a new collaboration with UVM and includes a tour of the UVM Theater Department, plus the opportunity to engage with UVM faculty about dual enrollment opportunities for Vermont high school students.

Links to: identity, teamwork, athletics, coming of age, community, adolescence. CC ELA: RL 1-10, SL 1-4, L 3-6.



Congressman John Lewis March

Tuesday, October 8 • 10 am
Grades 4-12 • 1 hour • *FREE

LIT, SS, DIV, ESS/SJ

Almost sixty years ago, Martin Luther King, Jr. edited a 16-page comic book about the Montgomery Bus Boycott that dramatized the fledgling movement and its tactics to a generation of future leaders, including a young John Lewis. Today, Congressman Lewis is continuing that legacy, using comics to educate and inspire a new generation. *March* is a live adaptation of these transformative graphic novels, bringing Lewis' memories of the civil rights movement to urgent new life as a catalyst for vital discussions about diversity, society, and active engagement in one's community, in ways that are not just historical, but directly relevant to today's world. *Attendance by lottery. 🌙

Links to: graphic novels, civil rights movement, activism, government, diversity, equity, community, American history/culture. CC ELA: RL 1-10, SL 1-4, L 1-6, RH 1-10, WHST 1, 2, 7, 8 & C3.D2.Civ.1-3, 6-11, 14 & C3.D2.His.1-8, 14-16.

Sponsored by **Jan and Harris Abbott**

In collaboration with and supported by the **Vermont Humanities**



Dog Man

The Musical

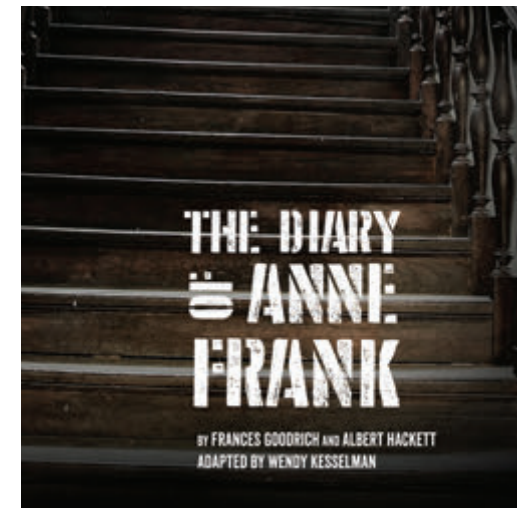
Wednesday, October 9 • 9:30 am & 12 pm
Grades 1-5 • 1 hour • \$8.50

LIT, SS, STEAM, HLTH

Dog Man: The Musical is a hilarious new production based on the worldwide bestselling series from Dav Pilkey, the creator of *Captain Underpants*. Best buds George and Harold have been creating comics for years, but now that they're in 5th grade, they figure it's time to level up and write a musical based on their favorite character, Dog Man, the crime-biting sensation who is part dog, part man, and all hero. Dog Man loves to fight crime and chew on the furniture. But while trying his best to be a good boy, can he save the city from Flippy the cyborg fish and his army of Beastly Buildings? Find out in this epic musical adventure featuring the hilarity and heart of Dav Pilkey's beloved characters.

Links to: literature, humor, heroism, action, problem-solving, character development. CC ELA: RL 1-10, RF 4, SL 1-4, L 1-4, 6.

Sponsored by **Yvette Pigeon and Fred "Chico" Lager**



National Players

Diary of Anne Frank

Thursday, October 10 • 10 am
Grades 6-12 • 90 minutes • \$8.50

LIT, SS, WORLD, ESS/SJ

In 1941 Amsterdam, 13-year-old Anne Frank goes into hiding with her family from the Nazis. For the next two years, she never leaves the attic where her family is concealed. With fear of discovery ever present, Anne finds solace writing in her diary, capturing the daily lives of the secret annex's inhabitants—from the horrors of war to the excitement of first love—with wit, determination, and idealism. With a multicultural cast, National Players brings the true story of this incredibly insightful young girl to the stage in hopes of inspiring the next generation to stand up for justice.

Links to: literature/biography, self-reflection, WWII, the Holocaust, war, perseverance, justice, family. CC ELA: RL 1-10, SL 1-4, L 4-6, RH1-2, 9, WHST 1, 4, 7-9 & C3.D2.Civ.1-3, 6, 10, 14, His.1-6, 14, 15, Geo. 1, 2, 4-6, 8, 10.

Sponsored by **Ducky Donath**



“The show was awesome! My students truly enjoyed the interactive pieces. They were able to learn so much about what culture is and how anything is possible when you conquer your fears!”

—Ms. Forde, Village Elementary

Collaborate with the Flynn for Act 77 innovations, giving your students real-world experiences that build transferable skills. Contact schoolprograms@flynncenter.org.



At Spruce Peak Performing Arts Center

Walk Two Moons



Friday, October 11 • 10 am
Grades 5-9 • 90 minutes • \$8.50

LIT, SS, HLTH, DIV, ESS/SJ

The National Players present a moving adaptation of the award-winning novel about family, identity, and coming-of-age. While driving cross-country with her grandparents in search of her mother, 13-year-old Sal meets many eccentric characters, but none more so than Phoebe, the main character in the stories Sal tells to entertain her grandparents. Phoebe's story bursts with wild conspiracy theories of her own missing mother, which helps Sal confront her own loss. But with a deadline looming, Sal might not make it in time to reunite with the one person she wants to find most.

Links to: family, identity, indigenous peoples/cultures/traditions, coming of age, literature, loss. CC ELA: RL 1-10, SL 1-4, L 4-6, RH 1, 2, 9, WHST 1, 4, 7-9 & C3.D2.Civ.10, His.3, 5.



Circa: Humans

Friday, October 18 • 10 am • Grades 6-12
1 hour • \$8.50

SS, STEAM, HLTH

Award-winning contemporary circus ensemble Circa presents a stirring journey of what it means to be human. With minimal equipment on a stripped-down stage, ten acrobats explore the physical limits of their bodies pushed to the extreme, simultaneously navigating their emotional vulnerability. Taking place between the physical and the unseen, *Humans* provides a glimpse at the redemptive power of strength. 🌟

Links to: humanity, resilience, strength (physical/emotional), trust, collaboration, physics, force, physical education, circus arts. CC ELA: EL 1, 3, 7, 9, 10, SL 1-4 & NEXT GEN: PS2.A & B, PS3.C.

Sponsored by **Concept 2**



Isango Ensemble The Magic Flute

Friday, October 25 • 10 am • All Grades
1 hour • \$8.50

SS, WORLD, DIV, ESS/SJ

From the townships of South Africa, Isango Ensemble bursts onto the stage in an inspired reimagining of Mozart's masterpiece opera *The Magic Flute*. A fairy tale with themes of love and good versus evil, classic arias are enlivened with exhilarating orchestrations of merry marimbas and powerful percussion. Winner of an Olivier Award for Best Musical Revival (Young Vic, London) and a Globes de Cristal for Best Opera (Théâtre du Châtelet, Paris), this fresh, fearless and fantastical production, co-produced by Eric Abraham and the Young Vic, brims with dazzling drama, crisp comedy, and the sublime joy of finding true love. 🌟

Links to: refugee experiences, South Africa, journeys, literature adaptation, African culture/history, resilience. CC ELA: RL 1-10, SL 1-4, L 3-6, RH 1-10, WHST 1, 2, 7, 8 & C3.D2.Civ.1-3, 6, 7, 10-12, 14, Geo.1, 2, 4-6, 8, 9, His.1-5, 14, 15.

Sponsored by **Lillian and Bruce Venner**



Performed in FlynnSpace, our black box theater

Much Ado About Nothing* (*At Dinner)

Friday, November 1 • 10 am • Grades 6-12
2+ hours • \$8.50

LIT, SS, HLTH

Set entirely around a dinner table, eight guests at a dinner party decide to act out Shakespeare's *Much Ado About Nothing* for their friends. The cast uses only what's on the table and the space around it, allowing the story to progress to a engrossingly inventive staging. This show stars Craig Maravich as Benedick and Chris Caswell as Beatrice. 🌟

Links to: Shakespeare, literature, ensemble, adaptation, power dynamics, relationships, honor, family. CC ELA: RL 1-10, SL 1-4, L 3-6.



Presented in the intimate Flynn Studios

Red Kite Green Mountain

**Monday, November 4 • 9:30 am, 11 am,
& 12:30 pm • All ages • 1 hour • \$8.50**

SS, STEAM, HLTH, DIV, ACC

Red Kite Green Mountain, designed for young people on the autism spectrum and their caregivers, is about making connections, fostering a strong sense of belonging, and finding comfort in just being who you are. Developed by the Flynn in collaboration with Chicago Children's Theatre, the performance features local artists and educators using beautiful, interactive puppets. These multi-sensory adventures are kept small and intimate, moving participants through the seasons and wildlife of Vermont with playful activities bringing young people into the world of the Green Mountains mindfully, always offering choice and support for each student.)

Links to: mindful play, imagination, nature, animals, VT history and wildlife, kinesthetic learning, universal design for learning, collaboration, self-expression.
CC ELA: RL 1-10, SL 1-4, L 3-6 & C3.D2.Civ.1, 2, 6, 7, 10, Geo.1, 3, His.1 & NEXT GEN: LS2.D, LS4.D.

Sponsored by **Ducky Donath**



At Spruce Peak Performing Arts Center

Go Home Tiny Monster

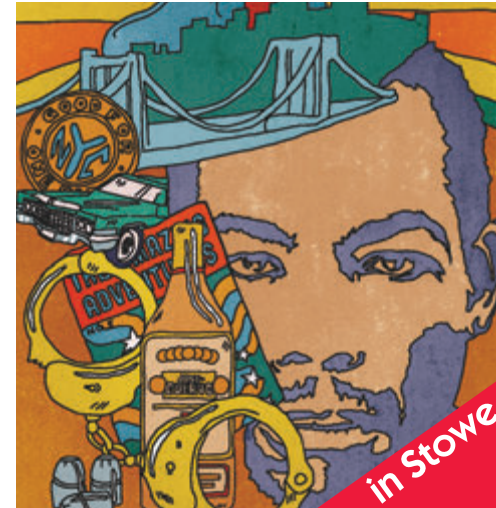


**Tuesday, November 5 • 10 am
Grades PreK-5 • 45 minutes + Q&A • \$8.50**

SS, HLTH, DIV, ACC, ESS/SJ

One day, Sylvie and her family of homespun creatures find themselves in need of a new home. Luckily, they have an audience full of people who can help them out. Inspired by true stories, *Go Home Tiny Monster* features The Gottabees' trademark mix of puppetry, joyously absurd silliness, physical theater, live music, and surprising poignancy.

Links to: home insecurity, community, helping others, gratitude, humor, interactive theater, community action.
CC ELA: RL 1-10, RF 1-4, SL 1-4, L 3-6 & C3.D2.Civ.1, 2, 6, 7, 10, Eco. 1, 2.



At Spruce Peak Performing Arts Center

Rhapsody in Black



**Thursday, November 7 • 11 am
Grades 7-12 • 1 hour + Q&A • \$8.50**

SS, HLTH, DIV, ESS/SJ

Rhapsody in Black is a one-man show that explores LeLand Gantt's personal journey to understand and eventually transcend racism in America. A prismatic look at life on the color line, Gantt presents a poignant, enraging, and often hilarious travelogue through the psyche of the perpetual "other." As he spends a lifetime struggling with what it means to be black, he ultimately understands what it means to be a man. A blistering indictment of tribalism in all forms, *Rhapsody in Black* deconstructs notions of race and identity, provoking thought, realigning perspectives, and sparking the conversation we need right now.)

Links to: blackness and black identity, racism, America, cultural awareness, otherness, empathy.
CC ELA: RL 1-10, SL 1-4, L 3-6 & C3.D2.Civ.1, 6, 7, 10, 14.



At UVM's Royall Tyler Theatre

The Normal Heart by Larry Kramer

**Friday, November 8 • 10 am
Grades 10-12 • 2 hours • \$8.50**

SS, DIV, HLTH, ESS/SJ

A searing drama about public and private indifference to the AIDS plague and one man's lonely fight to awaken the world to the crisis. *The Normal Heart* follows Ned Weeks, a gay activist enraged at the indifference of public officials and the gay community. While trying to save the world from itself, he confronts the personal toll of AIDS when his lover dies of the disease.

This matinee is part of a new collaboration with UVM and includes a tour of the UVM Theater Department, plus the opportunity to engage with UVM faculty about dual enrollment opportunities for Vermont high school students.

Links to: activism, AIDS, LGBTQ community/identity, death and dying, apathy, prejudice, survival. CC ELA: RL 1-10, SL 1-4, L 3-6 & C3.D2.Civ.1, 2, 6, 7, 10, 14.

Sponsored by **Nancy McClellan and Elliot Douglas**

"It was a safe environment where my students felt comfortable and part of the community. The teachers were able to provide support for each student."

—Kara Tymon, The New School

Everybody belongs!
We are committed to making our student matinees accessible and comfortable for all students and have sensory-friendly materials, break spaces, and more available for all shows.



“The work we did with the visiting artists provided many exercises to use with any age. The fact that we put them to use together and truly embodied them was powerful.”

—Alana Phinney,
Independent Teaching Artist

YOU become the student when you explore your creativity, discover new techniques, and earn re-certification credits with teacher workshops.



+ teacher workshop



Dance Theatre of Harlem

Wednesday, November 20 • 10 am
All Grades • 1 hour • \$8.50

SS, HLTH, DIV, ESS/SJ

Now in its fifth decade, the Dance Theatre of Harlem presents a powerful vision for ballet in the 21st century. The 17-member, multi-ethnic company performs a forward-thinking repertoire that includes treasured classics as well as contemporary works that use the language of ballet to celebrate African-American culture. Through performances, community engagement, and arts education, the company carries forward its message of empowerment through the arts. 🌈

Links to: ethnicity, movement, ensemble, innovation, African American history/culture, empowerment, identity, collaboration, expression. CC ELA: RL 1, 5, 7, SL 1-4 & C3.D2.Civ.2, 6-8, 10, 14.

Sponsored by **Bruce and Ruth Ann Beers**
and **Gale Hurd in support of early access to the arts**



Mayhem Poets

Monday, December 2 • 9:30 am & 12 pm
Grades 5-12 • 1 hour • \$8.50

LIT, SS, HLTH, DIV

This dynamic collective of young poet-performers use meter, rhyme, and verbal dexterity like the poets of old—but there's nothing old about their signature blend of hip-hop, theater, incisive pop culture references, side-splitting social commentary, and out-of-sight imagery. Engaging, funny, and powerfully in tune with the real issues that students face each day, the Mayhem Poets impart a hip and positive message that inspires future generations of young people to study and write poetry in classical and contemporary forms, while embracing diversity, non-violence, and a strong sense of self.

Links to: poetry, personal choices, self-esteem, self-expression, celebrating differences, voice. CC ELA: RL 1-10, SL 1-4, L 3-6 & C3.D2.Civ.1, 6, 7, 10.

Sponsored by **Bruce and Ruth Ann Beers**



+ teacher workshop

Daniel Bernard Roumain

Thursday, December 12 • 10 am
Grades 4-12 • 1 hour • \$8.50

SS, WORLD, HLTH, DIV, ESS/SJ

As the community artist-in-residence throughout the 2019-20 season, Daniel Bernard Roumain (DBR) is a renowned violinist/composer whose genre-bending music is attuned to the immigrant experience and the impact it has on artists and communities. “As a Haitian-American composer,” DBR says, “my bloodlines are divided and my ancestry remains gripped in revolution, protest, and uncertainty, as Haiti and the United States of America both represent historic victories against tyranny, while still struggling to find equity, hope, and change.” In a matinee mashup of words and music, DBR attempts to reconcile the deep divisions of country and community as both a father and an artist. 🌈

Links to: social justice, respecting difference, individuality and commonality, immigrant experience, storytelling, music, activism. CC ELA: RL 1-10, SL 1-4, L 4, 6 & C3.D2.Civ.2, 6-8, 10, 14.



Vermont Abenaki Artists Association Nikwôbi

Tuesday, December 17
& Wednesday, December 18 • 9:30 am
All Grades • 75 minutes • \$8.50

SS, DIV, HLTH, ESS/SJ

The Vermont Abenaki Artist Association's Matinee Series continues with a performance by Abenaki singer-songwriter Bryan Blanchette. With *Nikwôbi*, the Abenaki word for “know,” Bryan introduces students to Abenaki culture with a performance of traditional and modern Abenaki songs, using contemporary and traditional instruments of the Abenaki people. 🌈

Links to: indigenous peoples, Vermont history and land, traditions and culture, storytelling, music, community. CC ELA: RL 1-10, SL 1-4, RH 7, WHST 7-8 & C3.D2. Geo.2, 3, 6, 7, His. 2-4, 7.

Sponsored by **Flynn Friends at Wake Robin**

+ teacher workshop



We Shall Overcome

A Celebration of Martin Luther King Jr.

Wednesday, January 22 • 10 am
Grades 4-12 • 1 hour • \$8.50

SS, HLTH, DIV, ESS/SJ

Inspired by the words and action of Dr. Martin Luther King, Jr., Damien Sneed's *We Shall Overcome* showcases repertoire from across the African American music traditions that electrified generations of civil rights activists and defenders with interwoven spoken word from Dr. King's recorded speeches. This production ties together a living lineage of music and culture that includes traditional and modern gospel, classical, jazz, Broadway, and spirituals. From Aretha Franklin to Wynton Marsalis; Duke Ellington to Stevie Wonder; Nina Simone to Donny Hathaway; and traditional spirituals and music from *The Wiz*, Damien's unique understanding of each genre allows him to fluidly cover much musical ground in a single performance. 🌟

Links to: civil rights, activism, music history, African American culture/tradition/history, voice, expression.
CC ELA: RL 1-10, SL 1-4, L 4, 6, RH 7 & C3.D2.Civ.1, 2, 6-8, 10, 14, His. 1-5, 14, 15.

Sponsored by **John Bossange**



The One & Only Ivan

Monday, January 6 • 9:30 am & 12 pm
Grades 2-6 • 1 hour • \$8.50

LIT, SS, STEAM

For 27 years, the world of Ivan the gorilla was a dull cage in a roadside shopping mall. But when he meets Ruby, a baby elephant captured in the wild, Ivan's ambitions and imagination must grow to meet the challenge of rescuing his endangered new companion. Aided by Bob the scrappy dog and a young human ally, Ivan sets out to become the great silverback and protector he was always meant to be. Enter the mind of a remarkable hero in this unforgettable story of enduring friendship, drawn from true events. Based on the 2012 book by Katherine Applegate, a #1 *New York Times* bestseller and winner of the Newbery Medal.

Links to: animal rights, captivity, collaboration, unexpected friendship/allies, literature, adaptation, autonomy, memory, freedom. CC ELA: RL 1-10, RF 1-4, SL 1-4, L 3-6.

In Memory of **Ellinor Hauke**

Help your students make powerful curricular connections, engage with artists, and see the show with smart eyes with companion workshops.

"The Flynn Teaching Artist did a fantastic job with student-centered plans that incorporated what we requested at our meeting. She kept it focused on the learning and making it fun!"

—John Madden,
Shelburne Community School



Warriors Don't Cry

Friday, January 24 • 9:30 am & 12 pm
Grades 6-12 • 1 hour • \$8.50

LIT, SS, STEAM, HLTH, DIV, ESS/SJ

This original, one-woman play dramatizes Melba Patillo Beals' searing memoir about the battle to integrate Little Rock's central high school. Seen through the lens of a contemporary young activist, the performance asks, what does a warrior look like? What's worth fighting for? And can a young person change the world? Employing sophisticated video technology, original music, and spoken word poetry and prose, the show is a catalyst for deeper discussion about social responsibility, civil discourse, social media, community engagement, and freedom.

Links to: civil rights, activism, social justice, resilience, technology, poetry, voice, responsibility, community, freedom. CC ELA: RL 1-10, SL 1-4, L 4, 6, RH 7 & C3.D2.Civ.1, 2, 6-8, 10, 14, His. 1-5, 14, 15.

Sponsored by **Lillian and Bruce Venner**



At Spruce Peak Performing Arts Center

Che Malambo



Wednesday, February 5 • 10 am
All Grades • 1 hour • \$8.50

SS, WORLD, DIV, HLTH, ESS/SJ

The Argentine company Che Malambo excites audiences through precise footwork and rhythmic stomping, drumming of the bombos, singing, and whirling boleadoras (lassos with stones on the end). Presenting a thrilling, percussive dance and music spectacle, the company's work celebrates the unique South American cowboy tradition of the gaucho. This powerhouse all-male company of gauchos is directed by French choreographer and former ballet dancer Gilles Brinas. 🌟

Links to: world music, Argentinian culture/history/tradition, collaboration, innovation, ensemble, ethnicity, movement, expression.

CC ELA: RL 1-10, SL 1-4, L 4, 6, RH 7 & C3.D2.Geo.1, 4-6, 10, His.1, 2.



+ teacher workshop



MOMIX

Viva MOMIX

Monday, February 10 • 9:30 am & 12 pm
All Grades • 1 hour • \$8.50

SS, STEAM, WORLD, HLTH, DIV

Viva MOMIX is a mix-and-match variety of sections from MOMIX performances *Botanica*, *Alchemia*, *Remix*, *Opus Cactus*, and *Lunar Sea*. Small vignettes mix traditional MOMIX styles of illusion, beauty, magic, fun, and inventiveness. MOMIX dancers explode our sense of the possible with quirky humor and incredible visuals. From the incredible mind of Vermont's own Moses Pendleton (founding member of Pilobolus), MOMIX is a group of amazingly athletic dancer/illusionists who bring students on an unforgettable journey into the imagination. 🌙

Links to: American geography, animal life, plant life, creative expression, physical fitness, ensemble, technology. CC ELA: RL 1-10, SL 1-4, L 3-6 & NEXT GEN: LS1.A, LS2.A, C, D, LS4.A, C, D, ESS3.A, C, D.

Sponsored by Gale Hurd in support of early access to the arts



Rainbow Fish

Thursday, February 13 • 9:30 am & 12 pm
Grades PreK-3 • 1 hour • \$8.50

LIT, STEAM, HLTH

Mermaid Theater of Nova Scotia returns to the Student Matinee Series with their production of this multiple award-winning book. The first of three tales introduces the most beautiful fish in the sea, whose scales shimmer in all the colors of the rainbow. The Rainbow Fish is admired—and resented—by the entire underwater world, until a clever octopus advises him to give each fish one of his scales. Further adventures follow as the fish finds the courage to explore the great unknown deep sea, discovering a new world with wonderful sights and friendly creatures of all shapes, sizes and colors who are eager to make his acquaintance. The underworld wonderland is the setting for an introduction to the concept of opposites.

Links to: literature, perspective, sharing, friendship, selflessness, ocean life, respecting difference. CC ELA: RL 1-10, RF 1-4, SL 1-4, L 3-6 & NEXT GEN: LS2.D & LS4.D.

Sponsored by Tim and Lynn Vallee



+ teacher workshop

Performed in FlynnSpace,
our black box theater

Actors from the London Stage The Tempest

Wednesday, February 19 • 10 am
Grades 7-12 • 2+ hours • \$8.50

LIT, SS

From magic, a storm; from a storm, vengeance; from vengeance, virtue. The dramatic themes of Shakespeare's *The Tempest* resonate more strongly with every passing year. Indeed, the passage of time and knowledge is one of the play's most important themes, with a wronged man learning to wield his power with humility and empathy. Filled with romantic machinations, political scheming, and some of Shakespeare's most vivid characters, *The Tempest* is a perennially popular tale now seen as one of his greatest works. Co-founded by Sir Patrick Stewart, Actors From the London Stage is one of the most established Shakespeare theater companies in the world. 🌙

Links to: freedom, betrayal, power, family, compassion and forgiveness, supernatural, agency, ensemble, innovation. CC ELA: RL 1-10, SL 1-4, L 1, 3-6 & C3.D2.Civ.1-8.



**"After seeing the performance,
the students were bubbling
with positive remarks:
'I've never seen anything like
that.' 'That was amazing.'
Thank you so much for
helping spread the power
of the arts to all!"**

—Susan Palmer, BFA St. Albans



“We really appreciate the funding and dedication to support schools far away from the Flynn, as well as communities where opportunities for this kind of cultural activity are slim.”

—Annette Goyne,
Richford Jr./Sr. High School

All schools should experience the arts. If the cost of a trip or workshop seems daunting, know that we want you here and will work with you to break down financial barriers. Contact us to make a plan.



FLIP Fabrique Blizzard

**Monday, March 16 • 10 am • All Grades
1 hour • \$8.50**

STEAM, HLTH

FLIP Fabrique is the story of long-time friends living their dream. The groundbreaking circus collective draws on the deepest recesses of creativity for sublime feats of grace, strength, and imagination. With their new show, *Blizzard*, the acrobats lead a madcap journey in the dead of winter, inviting the audience to lose themselves in a complete whitewash of wonder. With performers at the peak of their art and outstanding visual poetry, *Blizzard* blows away everything in its path. 🌟

Links to: circus arts, innovation, technology, weather, force, movement, balance, ensemble, collaboration, whimsy. CC ELA: RL 1-10, SL 1-4, RST 1, 2 & NEXT GEN: ESS2.D, PS2.A & B, PS3.C.

Sponsored by **Consolidated Communications**



Peking Acrobats

**Wednesday, March 18 • 9:30 am & 12 pm
All Grades • 1 hour • \$8.50**

SS, STEAM, WORLD, HLTH, DIV

Rooted in more than 2,000 years of history and folk tradition, acrobatics are a vital thread in the fabric of Chinese arts and culture. The Peking Acrobats are China's finest—an elite troupe of gymnasts, jugglers, cyclists, and tumblers whose dazzling displays of flexibility, contortion, and control astound and inspire young audiences. Delicate, athletic, and entertaining, the acrobats' remarkable feats are accompanied by a live orchestra of traditional Chinese instruments. 🌟

Links to: Chinese history/culture/traditions, force, balance, physical education, discipline, ensemble, collaboration. CC ELA: RL 1-10, SL 1-4, RH 1-8, WHST 7-9 & C3.D2.Civ.2, 6, His. 1-5, 14.

Sponsored by **Flynn Friends at Wake Robin**



The Snowy Day

**Monday, March 23 • 9:30 am & 12 pm
Grades PreK-4 • 1 hour • \$8.50**

LIT, SS, HLTH, DIV

Follow Peter and his friends through winter, spring, summer, and fall as they romp and play, start snowball fights, journey in space, and explore under the sea in this imaginative musical play. Using innovative shadow puppetry, Childsplay Arizona's *The Snowy Day* celebrates the magic and boundless possibilities of childhood, as well as the challenges of growing up. A classic since its publication in 1962 and winner of the Caldecott Medal, Ezra Jack Keats' *The Snowy Day* was one of the first picture books for young people to feature an African-American protagonist and remains beloved today. 🌟

Links to: imagination, creative play, weather, adventure, literature, freedom, sensory exploration, adaptation. CC ELA: RL 1-10, SL 1-4, RF 1-4, L 3-6 & NEXT GEN: ESS2.D.

Sponsored by **The Golodetz Family**



At Spruce Peak Performing Arts Center

Spruce Peak Chamber Music Society Focus on Female Composers



**Friday, March 27 • 10 am • Grades 3-12
50 min + Q&A • \$8.50**

SS, HLTH, DIV, ESS/EJ, WORLD

Engage in Women's History Month from a new angle, celebrating classical music by female composers with the Spruce Peak Chamber Music Society. Women composers have written hundreds of masterpieces that are not performed as frequently as the work of their male peers. Explore the voice of women through performance and gain insight from a discussion led by Spruce Peak Chamber Music Society Artistic Director and world-renowned cellist, Jia Kim. 🌟

Links to: Women's History Month, musicians, composers, collaboration, feminism, voice, identity, expression, ensemble, justice. CC ELA: RL 1-10, SL 1-4, L 4, 6, RH 7 & C3.D2.Civ.1, 6, 7, 10, His. 1-5.



Penguins

Tuesday, April 7 • 9:30 am & 12 pm
Grades PreK-3 • 1 hour • \$8.50

LIT, STEAM, HLTH, DIV

Just like the other bonded animals at New York's Central Park Zoo, these two male penguins walk, play, swim, and dance together. When the duo try to hatch a rock, the zookeeper gives them an egg instead, and they find themselves on an adventure raising a chick for real. *Penguins* is a unique and engaging show about love and the ever-evolving meaning of family. Inspired by the true story reported by the *New York Times* that touched hearts world-wide, this new, non-verbal theater and dance production comes to life with delightful music and incredible movement and choreography.

Links to: animals, nature, families, respecting difference, movement, innovation, empathy, relationships, life cycles. CC ELA: RL 1-10, SL 1-4, L 4-6, RF 2, 4 & NEXT GEN: LS2.D, LS4.D.

Sponsored by **Tanya and Bill Cimonetti**



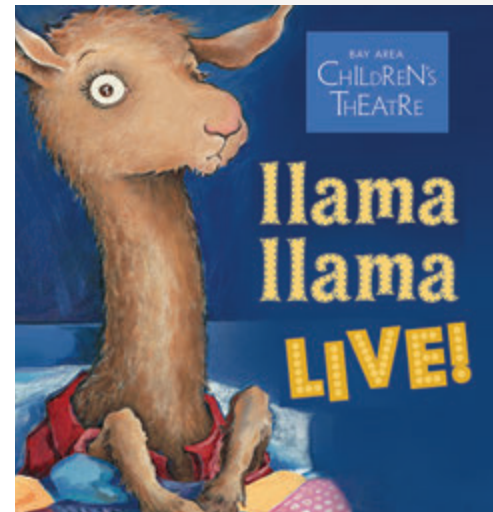
ENCORE! Introducing the Renewable Orchestra with VYO & VSO

Thursday, April 9 • 10 am • Grades 2-6
1 hour • \$8.50

STEAM, HLTH

The Vermont Youth Orchestra and Vermont Symphony Orchestra team up to show how composers use wind, water, and sun to energize the many instruments of the symphony orchestra. This interactive and multimedia performance introduces students to orchestral masterworks by Beethoven, Rossini, Handel, Smetana, and more, as we explore how musical resources can depict natural ones.

Links to: orchestral music, sustainability, environment, Vermont, nature, energy, relationship between art and nature, ensemble. CC ELA: RL 1-10, SL 1-4, L 4, 6, RH 7 & NEXT GEN: LS2.C, LS4.D, ESS2.D, ESS3.C.



Llama Llama–LIVE!

Monday, April 13 • 9:30 am & 12 pm
PreK-2 • 1 hour • \$8.50

LIT, HLTH

Bedtime has never been so exciting! After a long day of adventures at the school and the store, Baby Llama can't wait to put on his red pajamas. He and his toy friends are ready to sing and dance their way to sleep...except they need a bedtime story, a kiss goodnight, and a drink of water. But where's Mama? This hilarious new musical from Bay Area Children's Theater is based on the beloved, award-winning books by Anna Dewdney.

Links to: literature, family, humor, relationships, emotional understanding, decision making, connections, animals. CC ELA: RL 1-10, SL 1-4, L 4-6, RF 1-4.

Sponsored by **Flynn Friends at Wake Robin**



At Spruce Peak Performing Arts Center

David Gonzalez Boy Who Could Sing Pictures



Thursday, May 14 • 10 am • Grades 3-7
1 hour • \$8.50

LIT, SS, HLTH, DIV, ESS/SJ

Boy Who Could Sing Pictures follows Luca through a summer-long tour of surprises and wonders, reaching a climax in a fateful encounter with the evil ministers Reducto and Canoli. Based on the beloved book by Seymour Leichman and featuring the music of Villa-Lobos, Piazzola, Bach, Beethoven, and Daniel Kelly in beautiful 3-D surround sound, join Luca as he learns to trust his talents and save the day. The show also features *Nina Nails It*, a tale in which a savvy girl teaches a wizard where his true heart resides.

Links to: storytelling, technology, perception, stereotypes, beliefs, racism, anti-bullying, compassion, generosity, personal truth. CC ELA: RL 1-10, SL 1-4, L 3-6 & C3.D2.Civ.1, 2, 6-8, 10.



"Seeing a story come to life through a play was exciting for them, but it was just as exciting for me to watch their faces as they were totally engaged in the performance."

—Kirsten Belrose, Swanton

How to Order

Order Online at: www.flynnsms.org

Reservations

DUE DATES:

- Orders are accepted beginning **Monday, May 6**.
- Orders received **by Wednesday, May 22** are placed in a lottery that gives you the best chance of getting one of your top choice shows.
- Orders postmarked **after May 22** are processed on a first-come, first-served basis.
- Order confirmations are *emailed* in **June** and *mailed* in **early August**.

Please choose only
ONE method of
delivery! Duplicate
submissions cause
doubled orders.

SUBMITTING ORDERS:

- **SUBMIT ONLINE** at www.flynnsms.org (preferred method)
- **MAIL** printed form to Student Matinees, Flynn Center, 153 Main St., Burlington, VT 05401 or **HAND-DELIVER** printed form to Flynn Admin Offices, 147 Main St., Burlington (M-F 9 am-5 pm)
Printable forms are available at www.flynnsms.org
- **TICKET NUMBERS:** Please include teachers and chaperones in your count. If uncertain of numbers, we recommend overestimating slightly. You will be able to reduce seats up to six weeks prior to the show.
- **CONFIRMATION:** Reservations are confirmed by email in June; *no tickets are issued*. Seating is based on age and other accommodations.
- **WAITING LIST:** Orders for sold-out shows are wait-listed. We'll be in touch if seats open up.
- **WORKSHOPS:** You will receive a workshop order form with your show confirmation.

Payment

- **GROUPS OF 10 OR FEWER:** Pay in full at time of order.
- **GROUPS OF 11 OR MORE:** No need to pay now. A bill will be sent *12 weeks* prior to the show; payment or purchase order is due four weeks before the show. (Purchase orders confirm final seat adjustments and guarantee payment prior to show.) **Reservations not paid in full by the due date may be cancelled and a 50% cancellation fee charged.** Invoices for shows in September to November will be mailed in August.
- **SUBSIDIZED SEATS:** We're committed to raising funds to offer approximately 200 free seats per show for students who meet criteria for fully subsidized lunches. Because need always exceeds available subsidies, request subsidies *only* if there are no PTO or other community funds to support these students. There are several simple grants available to teachers; check out our funding resources page online. *To request more than 15% of your seats subsidized, include a letter explaining your higher need.* **Reminder: subsidies are for students, not chaperones.**
- **REFUNDS:** **There are NO REFUNDS for paid reservations** except in the unlikely case of a cancelled show. In that case, monies will be applied to another show, companion workshops, or refunded.

Changes & Cancellations

We know things change!

- **10 weeks before show:** Cancellations and large seat reductions are due in writing/by email (greater than 15% of your seat total).
- **6 weeks before show:** Small changes to seat numbers are due in writing/by email (up to 15% of your seat total).
- **4 weeks before show:** Full payment is due.
- **Weather-related cancellations:** There are no refunds of paid reservations. If your school is closed or delayed on a show day, we make every effort to offer another grade-appropriate show. If not possible, funds can be applied to companion workshops.
- Failure to meet these deadlines incurs a late cancellation/reduction fee equal to **50% of your reservation**.

Orders received
by **May 22**
have the best chance
of being filled.

A Round of Applause



The Flynn Center recognizes that field trip resources for schools are extremely limited, thus matinee prices for schools are significantly lower than prices for public performances. As a nonprofit organization, the Flynn is deeply grateful to the foundations, corporations, and individuals whose generous financial support keeps matinees affordable for schools. We thank all the individual show sponsors indicated under each show, as well as the following for general support:

Andrea's Legacy Fund, Bari and Peter Dreissigacker, Consolidated Communications, Everybody Belongs at the Flynn Fund, Forrest and Frances Lattner Foundation, TD Charitable Foundation, Vermont Arts Council, Vermont Concert Artists Fund of the Vermont Community Foundation, New England Foundation for the Arts, National Endowment for the Arts, and the Flynn Jazz Endowment for their underwriting of the 2019-2020 Student Matinee Series.







The Flynn's Cultural and Economic Equity Initiatives, including ticket subsidies and companion workshops for underfunded schools, are sponsored by **Northfield Savings Bank, Champlain Investment Partners, LLC** and **NRG Systems**. Additional ticket subsidy support from the **Bruce J. Anderson Foundation** and the **Walter Cerf Community Fund**. Words Come Alive Initiatives supported by **Bay Paul Foundation, Hearst Foundation** and **an anonymous donor**.

The programs, projects, and activities of the **Spruce Peak Arts Community & Education Fund** are made possible through the support of our sponsors: **The Arnold G. and Martha M Langbo Foundation, the Lintilhac Foundation, the George W. Mergens Foundation, the New England Foundation of the Arts NEST grant, Lisa and Rob Venne, Carolyn and Greg Waters, and the Windham Foundation**. Additional funding was provided by the **2018/19 Spruce Peak Lights Festival sponsors**. Funding support was also provided by our **2019 Après Chic Gala Event Community & Education sponsors**. For additional information about Spruce Peak Arts Center, contact education@SprucePeakArts.org.

Thanks to **Myer's Bagel Bakery** for contributing bagels and coffee for our school bus drivers and matinee ushers, and **Burlington's Department of Public Works** for use of its parking areas by school buses.

Additional funding received after April 20, 2019 will be recognized in the 2019-2020 Flynn Program Guide.

Accessibility Services

-  Designated seating, curbside assistance, and backstage parking are available for those with mobility needs.
-  Visual impairment is accommodated through designated seating.
-  Wireless assistive listening devices are available free of charge.
-  ASL interpretation is available upon request. Please contact sms@flynncenter.org to request this service or note it on your order form.
-  Selected productions will be audio-described.
-  Social stories, break spaces, sensory-friendly materials & more are available for students with sensory sensitivities.

 flynncenter.org/access.html

FLYNN STUDENT MATINEES



153 Main St., Burlington, VT 05401-8402

Non-Profit Org.
U.S. Postage
PAID
Burlington, VT
Permit No. 490



LOOK INSIDE:
23 Shows at the Flynn
6 shows at Spruce Peak
2 shows at UVM